

Instructions

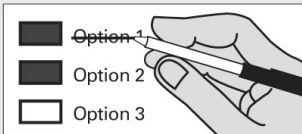
How to vote



Use a dark blue or black ink pen to completely fill in the box to the left of your choice.

Vote for one in each race. If you vote for more than one, no votes will be counted for that race.

If you make a mistake



Draw a line through the entire measure response or candidate's name.

Then you may make another choice.

↓ Start voting here

Skagit County Fire Protection District No. 08
Proposition No. 1
Annexation of Town of Lyman

Shall the Town of Lyman be annexed to and be a part of
Skagit County Fire Protection District No. 8?
(Vote for one)

Yes

No

End of Ballot



10000200100025

700005548172



4333031129





100002002000032

700005548366



This page intentionally left blank

Sample Ballot



4333031129